

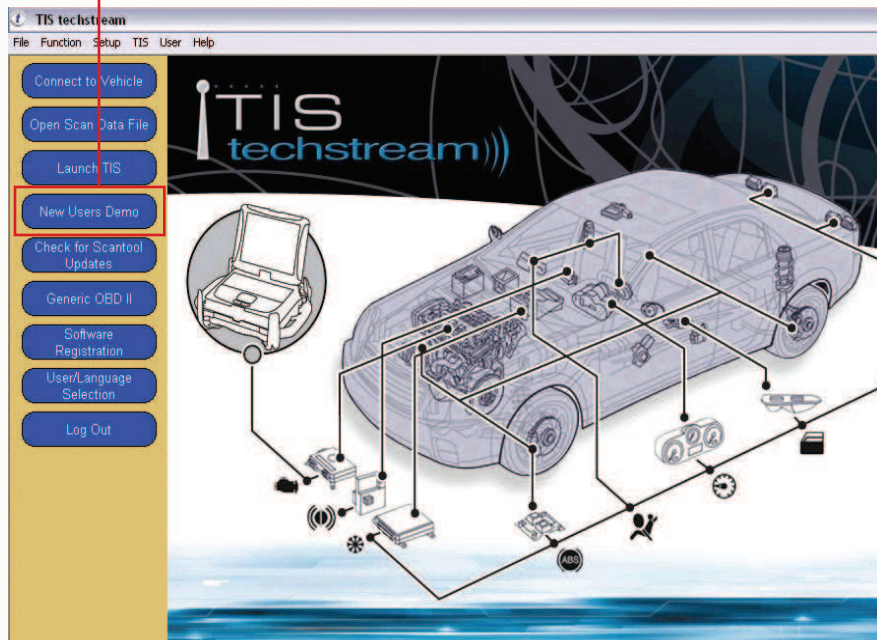
Techstream Quick Start Card

Getting Started

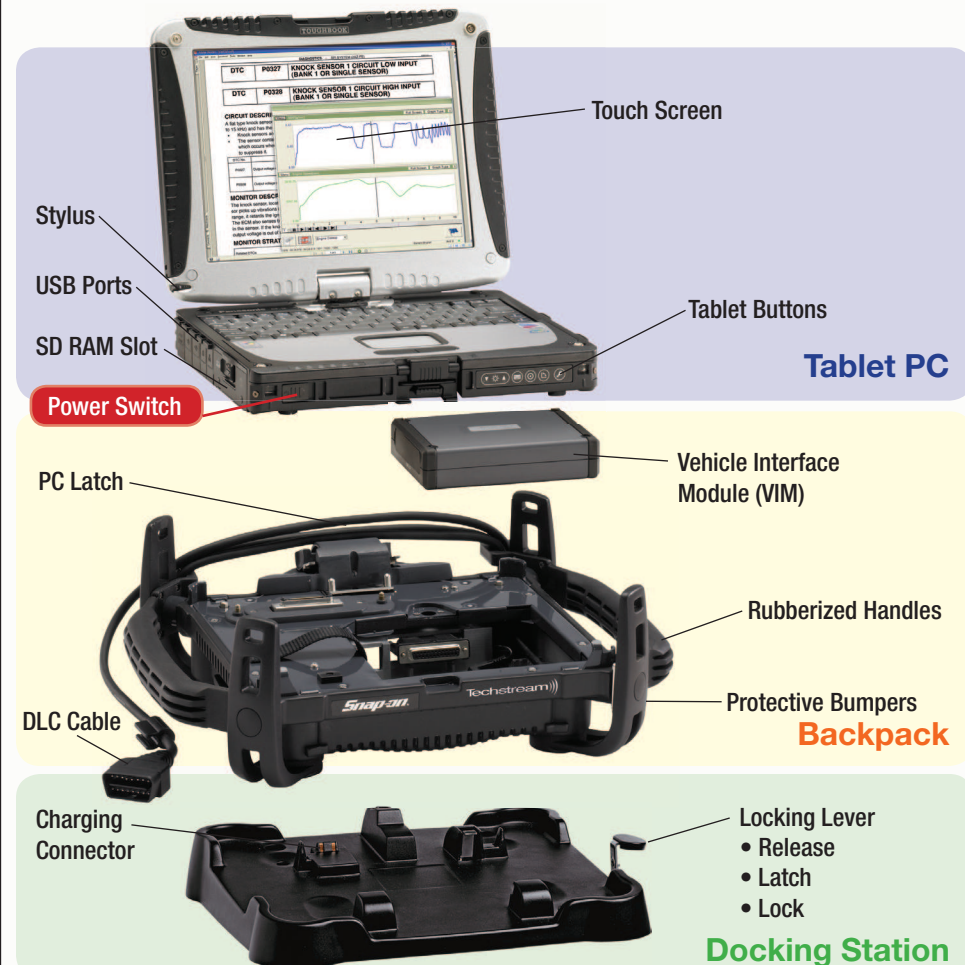
- 1** The Techstream power switch is on the left front corner of the PC. To power up Techstream, slide the power switch to the right and hold it for about 1 second.
- 2** To launch the Techstream software, double click on the 'Techstream' icon on the desktop.
- 3** Once Techstream is open, you can click the 'New User Demo' button to learn more about the Techstream program.



New Users Demo

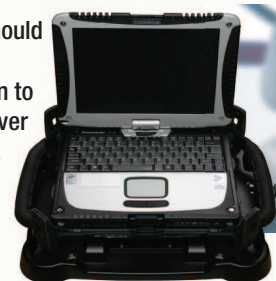


Techstream Components



Power and Charging

Techstream should be left on the docking station to charge whenever it is not in use.

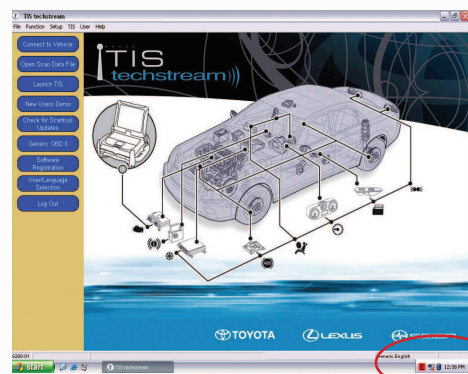


Techstream also charges when connected to the vehicle.



Techstream Quick Start Card

System Icons



The 'system tray' in the bottom right corner of the screen contains icons that let you monitor the operation of your Techstream tablet PC.

Wireless Connection



When you're connected to the dealership's wireless network, you'll see this icon in the system tray.



If your connection isn't working properly, you'll see this icon instead. Contact your dealer IT support for assistance.

Error Reports



An error report can be submitted to report Techstream software problems.

- Some error reports are generated automatically.
- You can also generate an error report manually by hitting F12 or clicking the 'E' in the system tray.

Battery Life



This icon indicates that you're connected to external power and the battery is charging.



3:54 hours (98%) remaining

Under battery power, rolling your cursor over this icon displays the remaining battery life.

Screen Maintenance

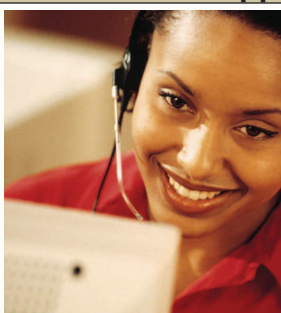


Protective Screen Cover

- Techstream's pressure sensitive screen is covered by a protective film.
- The screen cover should only be cleaned with a soft cloth such as the one provided in the accessory kit.
- When the screen cover becomes worn or damaged, it should be replaced. For optimum daylight visibility, use P/N 3-05206A04 protective film covers.

Caution: You should only touch the screen with your finger tip or a stylus. Sharp objects, such as a pocket screwdriver, will damage the screen even if the protective cover is in place.

Techstream Support

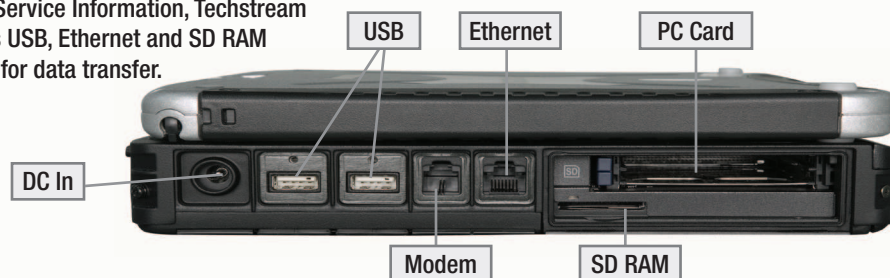


Techstream includes a next business day restore program that will get you back up and running fast. For support contact the numbers below.

TMS: **1-877-DL-DAILY**
 U.S. LEXUS: **1-877-DL-DAILY**
 GST: **1-800-933-3416**
 SET: **1-800-982-6057**
 TdM: **1-877-DL-DAILY**
 TCI: **1-888-598-1111 OPT 4**
1-416-438-1179 OPT 4 (TORONTO)

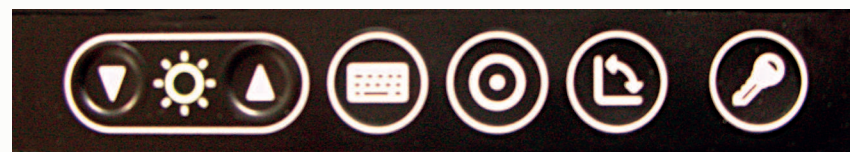
Connecting to Techstream

In addition to its wireless connection with Service Information, Techstream offers USB, Ethernet and SD RAM ports for data transfer.



Tablet Buttons

Techstream can be used as a standard laptop, or as a tablet PC. These 'tablet buttons' are useful when working in tablet mode:



Brightness

On-screen
Keyboard

Enter

Rotate
Display

Ctl+Alt+Del