

KW-3.0SPL

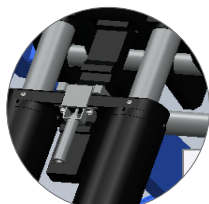
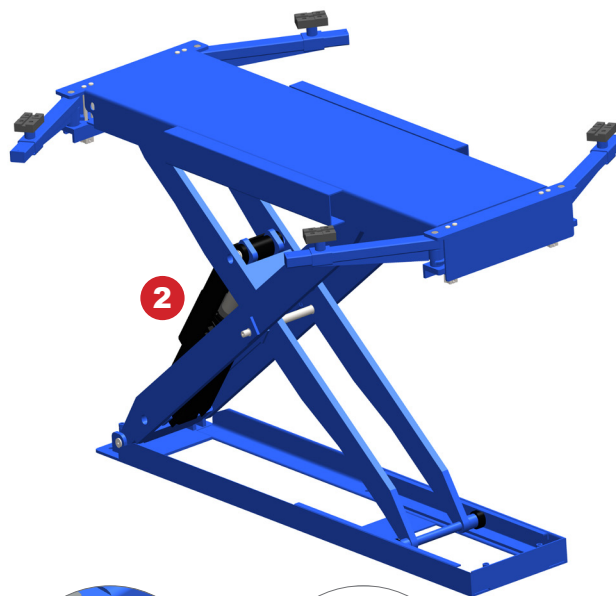
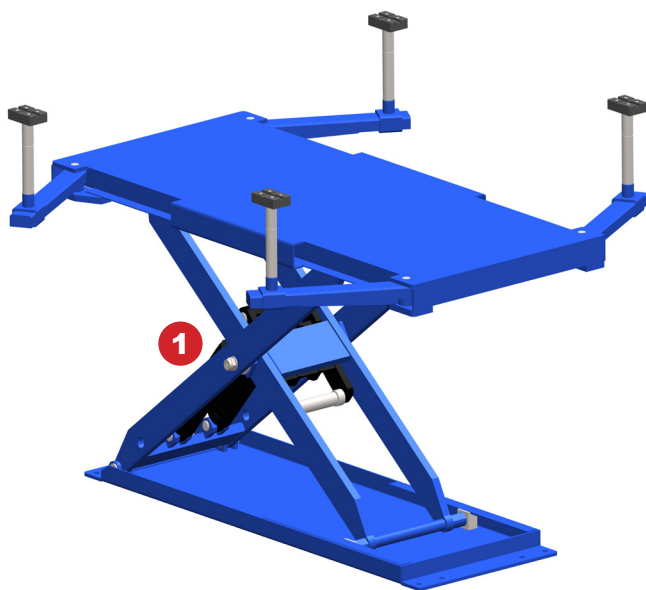
3000Kg/6600lbs

KW-3.0SPLH

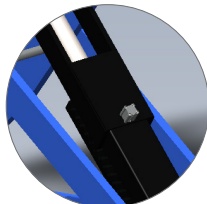
3000Kg/66000lbs

KW-3.5SP

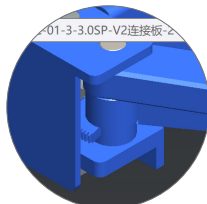
3000Kg/66000lbs



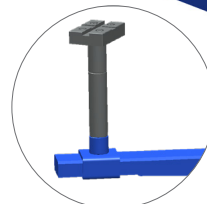
1 Mechanical lock, pneumatic release



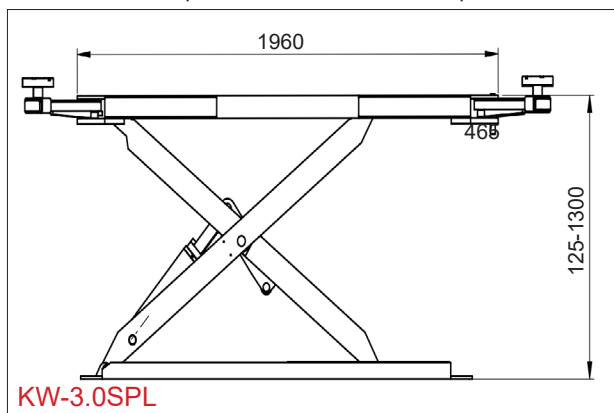
2 Mechanical lock, pneumatic release



With lock on arms for safety

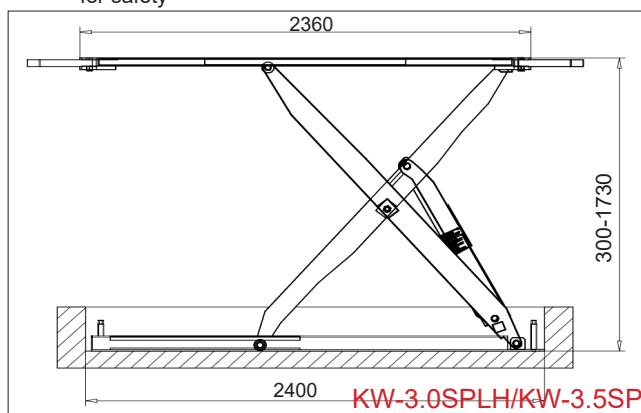


With extensions

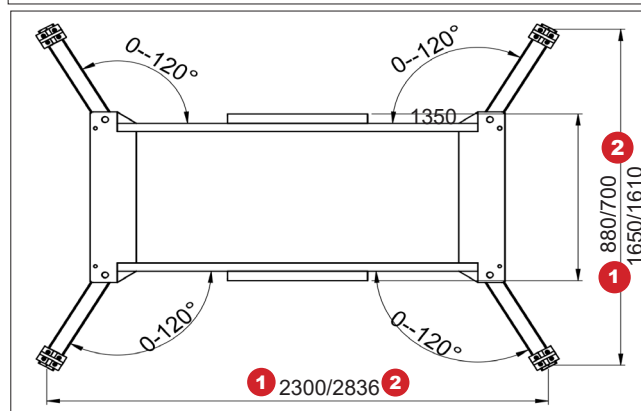


KW-3.0SPL

Dimension drawing



KW-3.0SPLH/KW-3.5SP



Features:

- 1 Scissor structure to save space;
- 2 24V low voltage control;
- 3 With mechanical lock and pneumatic release;
- 4 With parachute valve and safety valve to ensure the safety of machine;
- 5 Be available to be installed inside the spray booth.